

Project:	Catalog#:	Type:
Prepared By:	Notes:	Date:

**FMB01R17E93050-TF-BN** (brushed nickel)  
**FMB01R17E93050-TF-BK** (black finish)  
 LED Round Metal-trim Flushmount Fixture  
 CCT-select • 5 Year Limited Warranty



brushed nickel

black finish



### Overview

Energetic Lighting's FMB01R17E series of LED round flushmount fixtures are designed to emulate the look and feel of traditional circline fluorescent tube flushmount fixtures, but operate at a significantly lower wattage. You can freely adjust 3000K (warm white)/4000K (cool white)/5000K (daylight) according to your needs with our flush mount ceiling light, which emits different comfortable lighting to meet your daily needs. Installation is quick and simple when mounting over standard ceiling junction boxes using the included crossbar and hardware, and further output control is available by installing on circuits with standard wall triac dimmers. With a CRI >90, this fixture will bring out vibrant true-to-life colors of all objects illuminated within the room. Constructed with a durable steel housing body and LED lifetime rating of at least 50,000 hours, this rugged flushmount is designed for many years of reliable operation.

### Features

- Ez-CCT field -selectable CCT - 3000K(std), 4000 K & 5000 K @>90 CRI
- Suitable for damp locations installations
- Dimmable down to 10% with triac wall switch dimmers
- 14-inch 2 8W ceiling light, The flush ceiling light has a CRI of 90+

### Applications

- Residential and Multi-family
- Commercial and Retail
- Office and Hallway
- Healthcare and Hospitality
- General Indoor Area

### Highlights



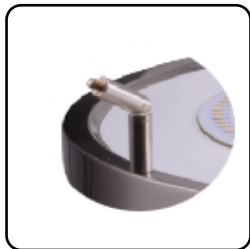
Freely adjust between 3000K (warm white), 4000K (cool white), 5000K (daylight) according to needs



Standard 3-piece housing with toolless thumb nut retainers for easy access to inner compartment



Elegant brushed aluminum trim with large diffusion lens to provide an even light distribution



Thanks to patented knuckle design, it's more easy to install with only one person.

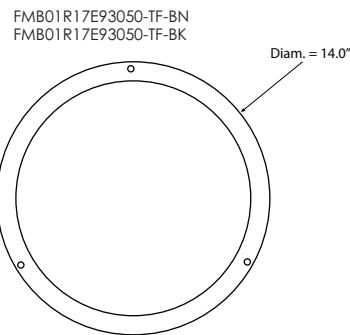
### Load Information

Input Voltage	120 Vac
Power Factor	>0.9
THD	<20%
Low Temp Start	-20°C (4°F)
Max Temp	40°C (104°F)
Unit Weight	14" 2 lbs per pack

### Shipping Information

Item	Weight	Box Qty.
14"	14 lbs	6 per case

### Dimensions





## Model Ordering Number

Series Prefix	Lumens	Dimming	CRI	CCT
<b>FMB01R</b>	<b>17</b>	<b>E</b>	<b>9</b>	<b>3050</b>
<b>FMB01R</b> Energetic LED Flush Mount Round CCT-Selectable	<b>17</b> 1700LM	<b>E</b> Dimmable	<b>9</b> 90 CRI	<b>3050</b> 3000K, 4000K, or 5000K

## STOCK ORDER INFORMATION

### CCT Selectable 14" Profile 120V (Brushed Nickel)

Model Number	Lumens	Wattage	LPW	Color Temp	CRI	Voltage	Dimming	Certificate	Pallet Qty
FMB01R17E93050-TF-BN	1700LM	28W	60	3000k,4000k, &5000k CCT	90	120V	Triac	ETL/FCC	84

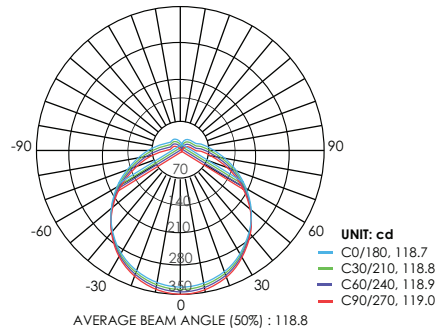
### CCT Selectable 14" Profile 120V (Black)

Model Number	Lumens	Wattage	LPW	Color Temp	CRI	Voltage	Dimming	Certificate	Pallet Qty
FMB01R17E93050-TF-BK	1700LM	28W	60	3000k,4000k, &5000k CCT	90	120V	Triac	ETL/FCC	84

## PHOTOMETRIC DATA

Model: FMB01R17E93050-TF-BN(-BK)  
 Test Report: FMB01R17E93050-TF-BN.ies  
 CCT: 3000K  
 Lamp Type: LED  
 Lumens: 1700 LM  
 Input Watts: 28 W  
 Efficacy: 60 LM/W

### Lumen Intensity Graph: FMB01R17E93050-TF-BN(-BK)



Mounting Height	MAX	Iso-fc Avg:	Diameter:
5 ft	10.4 fc MAX	5 fc	8.7 ft.
8 ft	6.3 fc MAX	2.5 fc	11.7 ft.
10 ft	4 fc MAX	2 fc	12.6 ft.
12 ft	2.7 fc MAX	1 fc	18 ft.
16 ft	1.4 fc MAX	0.75 fc	20.5 ft.
20 ft	.92 fc MAX	0.5 fc	24.3 ft.