

E1DLD6 Series

LED LDisk Light
CCT-Selectable • 6-in profile

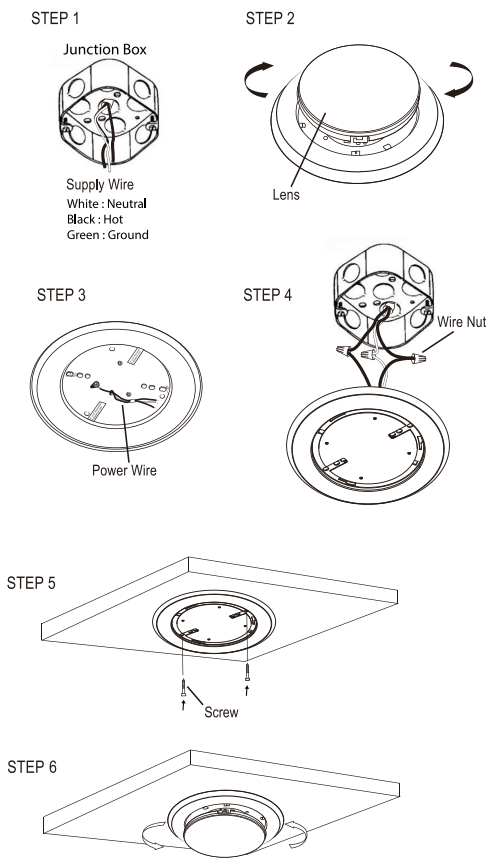


*Refer to the Stock Ordering Information Table below for qualified models

KEY FEATURES

- Convenient can-less downlight solution mounts over standard junction boxes
- EZCCT field-selectable CCT - 2700K, 3000K, 3500K, 4000K & 5000K @ >90 CRI
- Also available in individual fixed-CCT versions: 3000K, 4000K, or 5000K
- Energy efficient 15W total wattage with an output of 1,100 lumens
- Easy two-piece installation while maintaining a slim unobtrusive outer profile
- Suitable for wet location installations
- Dimmable down to 10% with standard 120Vac triac dimmer switches

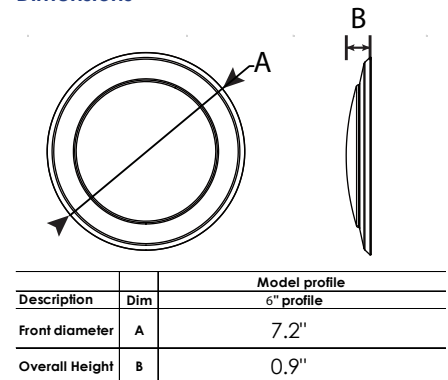
Installation Overview



Load Information

Input Voltage	120Vac
Power Factor	0.70/ 0.9 (EZCCT)
Low Temp Start	-25°C (-13°F)
Max Temp	45°C (113°F)
Unit Weight	0.72 lbs

Dimensions



Shipping Information

Unit (individual)	Unit dimension	Unit Weight
E1DLD6 series	8.2" x 1.5" x 8.27"	0.588 lbs

Case pack	Units per Case	Case dimension	Case Weight
E1DLD6 series	30 units/case	25.4" x 15.9" x 9.0"	17.64 lbs

Pallet info	Cases per Pallet	Units per Pallet
E1DLD6 series	35 cases	1050 units

Specific Lumen output per CCT setting

Profile	Wattage	Color Temperature Setting				
		2700K	3000K	3500K	4000K	5000K
6"	15 W	1050 lm	1100 lm	1150 lm	1150 lm	1170 lm

Stock Ordering Information and Specifications

Catalog Logic	Order #	Lumens	Wattage	LPW	Color Temperature	CRI	Voltage	Dimming	Certifications	Pallet Qty
E1DLD6-930	50095	1100 lm	15 W	73	3000K	90	120Vac	Triac	ETL	1050 pcs
E1DLD6-940	50096	1150 lm	15 W	76	4000K	90	120Vac	Triac	ETL	1050 pcs
E1DLD6-950	50097	1170 lm	15 W	78	5000K	90	120Vac	Triac	ETL	1050 pcs
E1DLD6-92750	50098	1170 lm (max) see table	15 W	73	2700K, 3000K, 3500K, 4000K, 5000K selectable	90	120Vac	Triac	ETL, JA8 Title 24	1050 pcs